



# ZNF23 Polyclonal Antibody

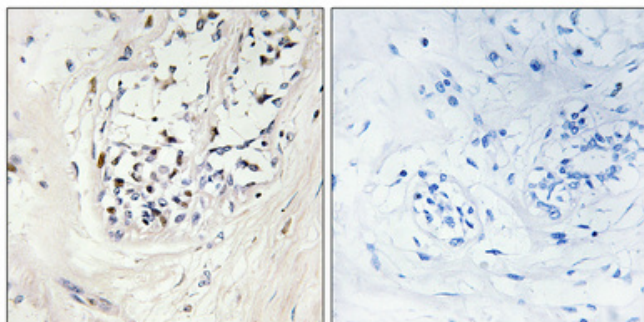
<b>Catalog No</b>	YP-Ab-02179
<b>Isotype</b>	IgG
<b>Reactivity</b>	Human;Rat;Mouse;
<b>Applications</b>	WB;IHC;IF;ELISA
<b>Gene Name</b>	ZNF23
<b>Protein Name</b>	Zinc finger protein 23
<b>Immunogen</b>	The antiserum was produced against synthesized peptide derived from human ZNF23. AA range:151-200
<b>Specificity</b>	ZNF23 Polyclonal Antibody detects endogenous levels of ZNF23 protein.
<b>Formulation</b>	Liquid in PBS containing 50% glycerol, 0.5% BSA and 0.02% sodium azide.
<b>Source</b>	Polyclonal, Rabbit,IgG
<b>Purification</b>	The antibody was affinity-purified from rabbit antiserum by affinity-chromatography using epitope-specific immunogen.
<b>Dilution</b>	Western Blot: 1/500 - 1/2000. Immunohistochemistry: 1/100 - 1/300. Immunofluorescence: 1/200 - 1/1000. ELISA: 1/10000. Not yet tested in other applications.
<b>Concentration</b>	1 mg/ml
<b>Purity</b>	≥90%
<b>Storage Stability</b>	-20°C/1 year
<b>Synonyms</b>	ZNF23; KOX16; ZNF359; ZNF612; Zinc finger protein 23; Zinc finger protein 359; Zinc finger protein 612; Zinc finger protein KOX16
<b>Observed Band</b>	70kD
<b>Cell Pathway</b>	Nucleus .
<b>Tissue Specificity</b>	Atrial muscle,Brain,Hippocampus,Human small intestine,Lymphoid,Muscle,Substantia ni
<b>Function</b>	function:May be involved in transcriptional regulation. May have a role in embryonic development.,similarity:Belongs to the krueppel C2H2-type zinc-finger protein family.,similarity:Contains 1 KRAB domain.,similarity:Contains 17 C2H2-type zinc fingers.,
<b>Background</b>	function:May be involved in transcriptional regulation. May have a role in embryonic development.,similarity:Belongs to the krueppel C2H2-type zinc-finger protein family.,similarity:Contains 1 KRAB domain.,similarity:Contains 17 C2H2-type zinc fingers.,
<b>matters needing attention</b>	Avoid repeated freezing and thawing!



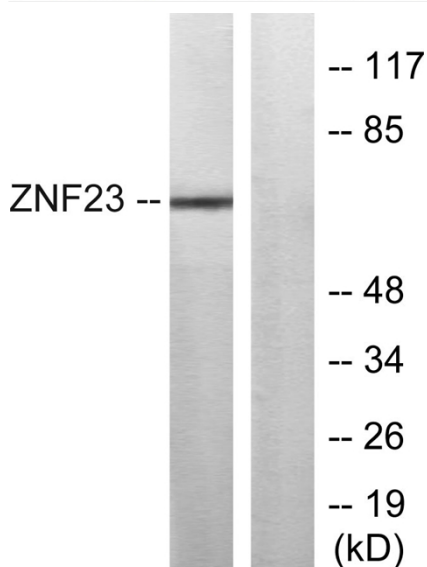
## Usage suggestions

This product can be used in immunological reaction related experiments. For more information, please consult technical personnel.

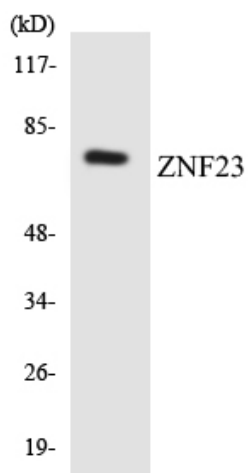
## Products Images



Immunohistochemical analysis of paraffin-embedded Human breast cancer. Antibody was diluted at 1:100(4° overnight). High-pressure and temperature Tris-EDTA,pH8.0 was used for antigen retrieval. Negative contrl (right) obtained from antibody was pre-absorbed by immunogen peptide.



Western blot analysis of lysates from LOVO cells, using ZNF23 Antibody. The lane on the right is blocked with the synthesized peptide.



Western blot analysis of the lysates from RAW264.7 cells using ZNF23 antibody.